

Timing chain kit

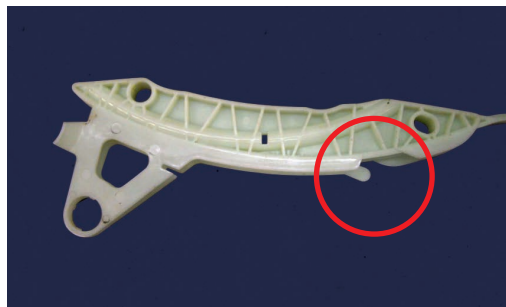
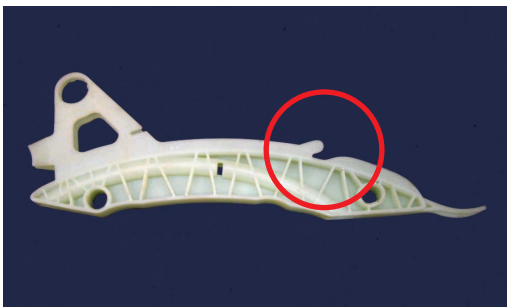
MCK0150 and MCK0152

NEW PAD

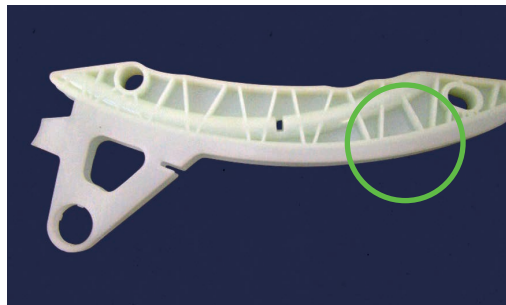
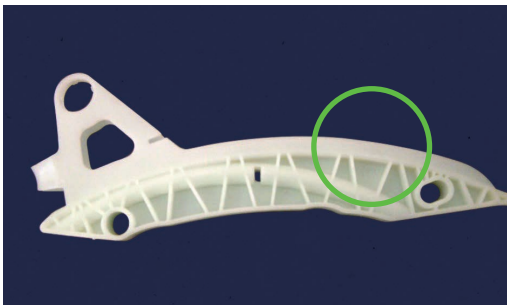
Inside the afore-mentioned kits a **new pad** has been placed.

The new version presents a different shape if compared with the previous one, so the side is elongated.

Previous version

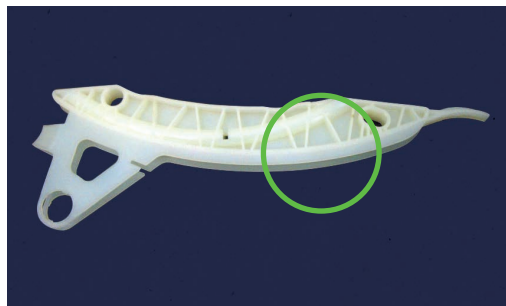
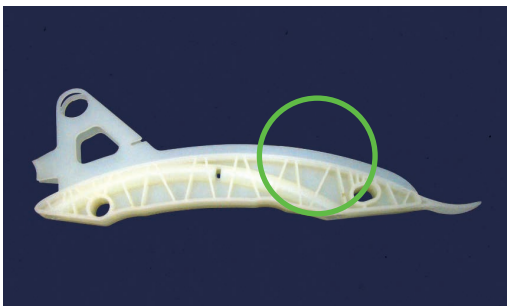


New supplied version



The ameliorative modification follows what has been done by OE producer.

OE sample



The two versions are equivalent and interchangeable.